

HIGH-RATIO MOUNTS

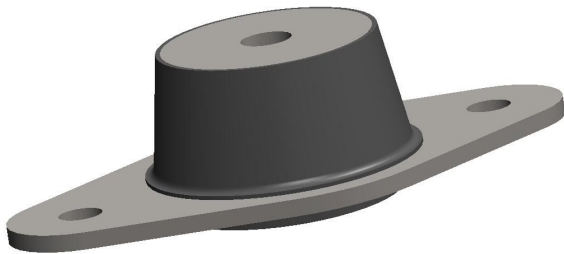
High-Ratio mounts are lightweight mounts that provide superior vibration performance. They are compact lightweight isolators that are ideally suited for isolating small engines, compressors and rotating machinery in both on and off road applications. They are offered standard in neoprene rubber with a black enamel paint finish and available in other materials and finishes upon request.

Features:

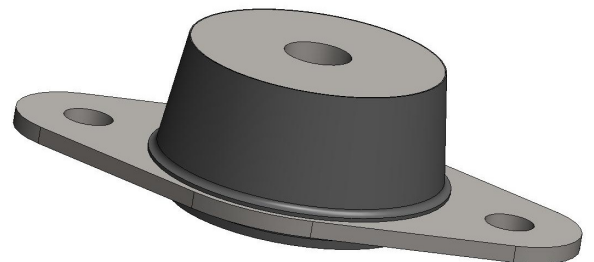
- Compact, lightweight design
- Fail-safe design when used with snubbing washers
- Efficiently isolates vibration in all directions

High-ratio mounts are available in three sizes with load ratings from 50 to 1,020 lbs.

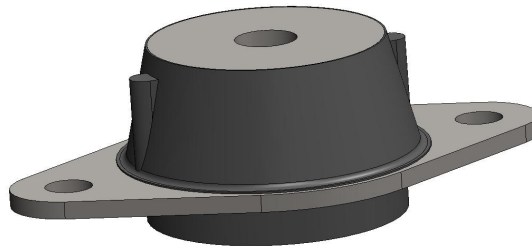
- 2109 Size: Load ratings from 50 to 300 lb
- 2111 Size: Load ratings from 100 to 420 lb
- 2119 Size: Load ratings from 320 to 1020 lb



VIB2109



VIB2111

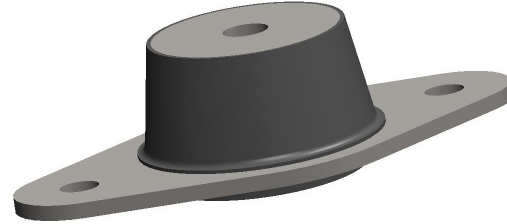


VIB2119

HIGH-RATIO MOUNTS VIB2109 SERIES

PRODUCT SPECIFICATIONS

Operating Temperature: -20 to +200 F
 Maximum Transmissibility at Resonance: 10.0
 Load Capacity: 50 – 300 lb
 Axial-Radial Stiffness Ratio: 4:1
 Part Weight: 0.42 lb
 Materials: Core & Flange: C.R.S, SAE 1010 or equiv.
 black acrylic painted.
 Elastomer: Neoprene

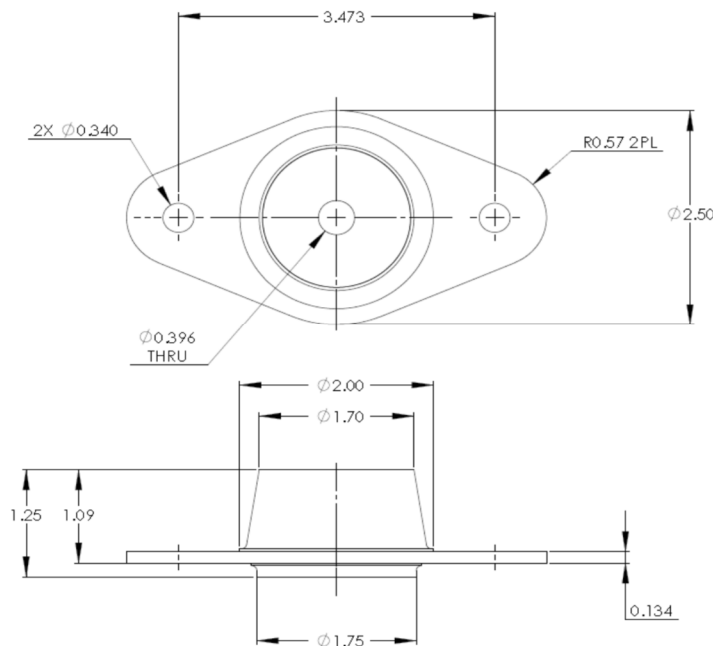


Recommended installation:
 Maximum bolt torque: 45 ft-lb (dry) (Grade 8)

Performance Characteristics

Part No.	Nominal Axial Static Load (lbs)	Axial Natural Frequency	Dynamic Axial Spring Rate		Dynamic Radial Spring Rate		Color Code
			Hz	lb/in N/mm	lb/in N/mm	N/mm	
VIB2109-1	50	10	510	90	128	23	Red
VIB2109-3	90		920	160	228	40	White
VIB2109-5	150		1530	268	383	68	Blue
VIB2109-7	215		2190	384	550	96	Purple
VIB2109-9	300		3060	536	765	134	Grey

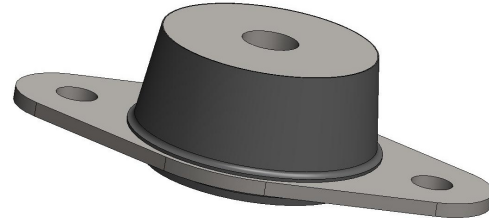
*Fn at max rated load and .036 inch DA input
 To correct for loads lower than rated load use:
 $F_n = F_{nm} \cdot \sqrt{P_r / P_a}$
 Where:
 F_n : Natural Frequency at actual load (Hz)
 F_{nm} : Nominal Natural Frequency (Hz)
 P_r : Rated load
 P_a : Actual load



HIGH-RATIO MOUNTS VIB2111 SERIES

PRODUCT SPECIFICATIONS

Operating Temperature: -20 to +200 F
 Maximum Transmissibility at Resonance: 10.0
 Load Capacity: 100 – 420 lb
 Axial-Radial Stiffness Ratio: 4:1
 Part Weight: 0.5 lb
 Materials:
 Core & Flange: C.R.S, SAE 1010 or equiv. black acrylic painted.
 Elastomer: Neoprene

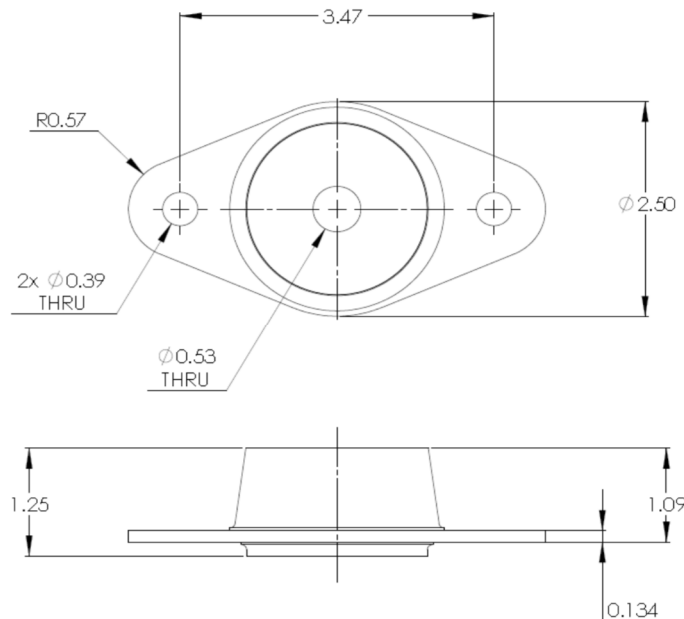


Recommended installation:
 Maximum bolt torque: 120 ft-lb (dry) (Grade 8)

Performance Characteristics

Part No.	Nominal Axial Static Load (lbs)	Axial Natural Frequency	Dynamic Axial Spring Rate		Dynamic Radial Spring Rate		Color Code
		Hz	lb/in	N/mm	lb/in	N/mm	
VIB2111-2	100	10	1020	180	255	45	Red
VIB2111-4	155		1580	277	395	69	White
VIB2111-6	230		2350	410	588	102	Blue
VIB2111-8	320		3260	570	815	143	Purple
VIB2111-10	420		4280	750	1070	187	Grey

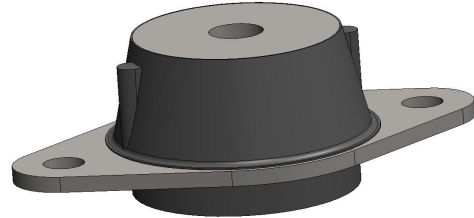
*Fn at max rated load and .036 inch DA input
 To correct for loads lower than rated load use:
 $F_n = F_{nn} \cdot \sqrt{P_r/P_a}$
 Where:
 F_n: Natural Frequency at actual load (Hz)
 F_{nn}: Nominal Natural Frequency (Hz)
 P_r: Rated load
 P_a: Actual load



HIGH RATIO MOUNTS VIB2119 SERIES

PRODUCT SPECIFICATIONS

Operating Temperature: -20 to +200 F
 Maximum Transmissibility at Resonance: 10.0
 Load Capacity: 320 – 1020 lb
 Axial-Radial Stiffness Ratio: 4:1
 Part Weight: 0.75 lb
 Materials:
 Core & Flange: C.R.S, SAE 1010 or equiv. black acrylic painted.
 Elastomer: Neoprene

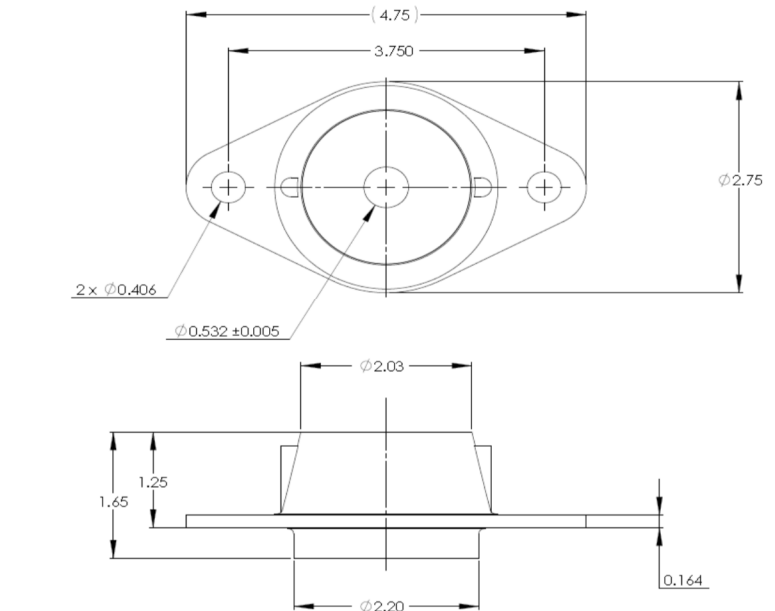


Recommended installation:
 Maximum bolt torque: 120 ft-lb (dry) (Grade 8)

Performance Characteristics

Part No.	Nominal Axial Static Load (lbs)	Axial Natural Frequency	Dynamic Axial Spring Rate		Dynamic Radial Spring Rate		Color Code
		Hz	lb/in	N/mm	lb/in	N/mm	
VIB2119-2	120	10	1220	210	305	54	Red
VIB2119-1	180		1840	320	460	80	White
VIB2119-5	280		2860	500	715	125	Blue
VIB2119-7	380		3880	680	970	170	Purple
VIB2119-9	540		5510	964	1380	240	Grey

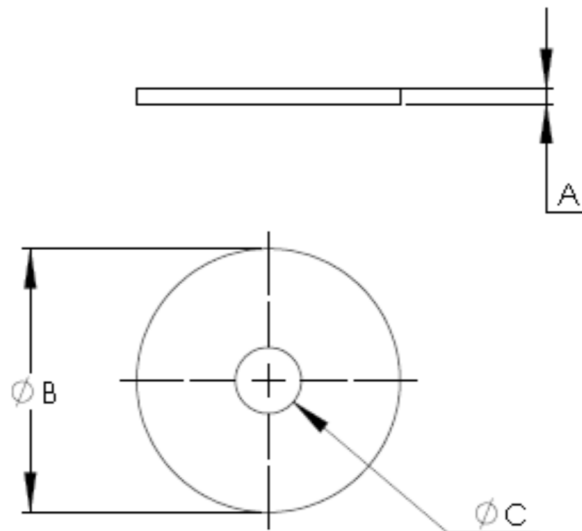
*Fn at max rated load and .036 inch DA input
 To correct for loads lower than rated load use:
 $F_n = F_{nn} * \sqrt{P_r / P_a}$
 Where:
 F_n: Natural Frequency at actual load (Hz)
 F_{nn}: Nominal Natural Frequency (Hz)
 P_r: Rated load
 P_a: Actual load



SNUBBING WASHERS

PRODUCT SPECIFICATIONS

Material: Steel per ASTM A1008/A1011
 Finish: Zinc plated per ASTM B633, Type II, Class FE/ZN 12



Size	A (Thickness)	B (OD)	C (ID)	PART NO.
VIB2109	.125	2.00	.450	W10046-3
VIB2111	.125	2.13	.532	W10044-2
VIB2119	.150	2.25	.532	W10046-8